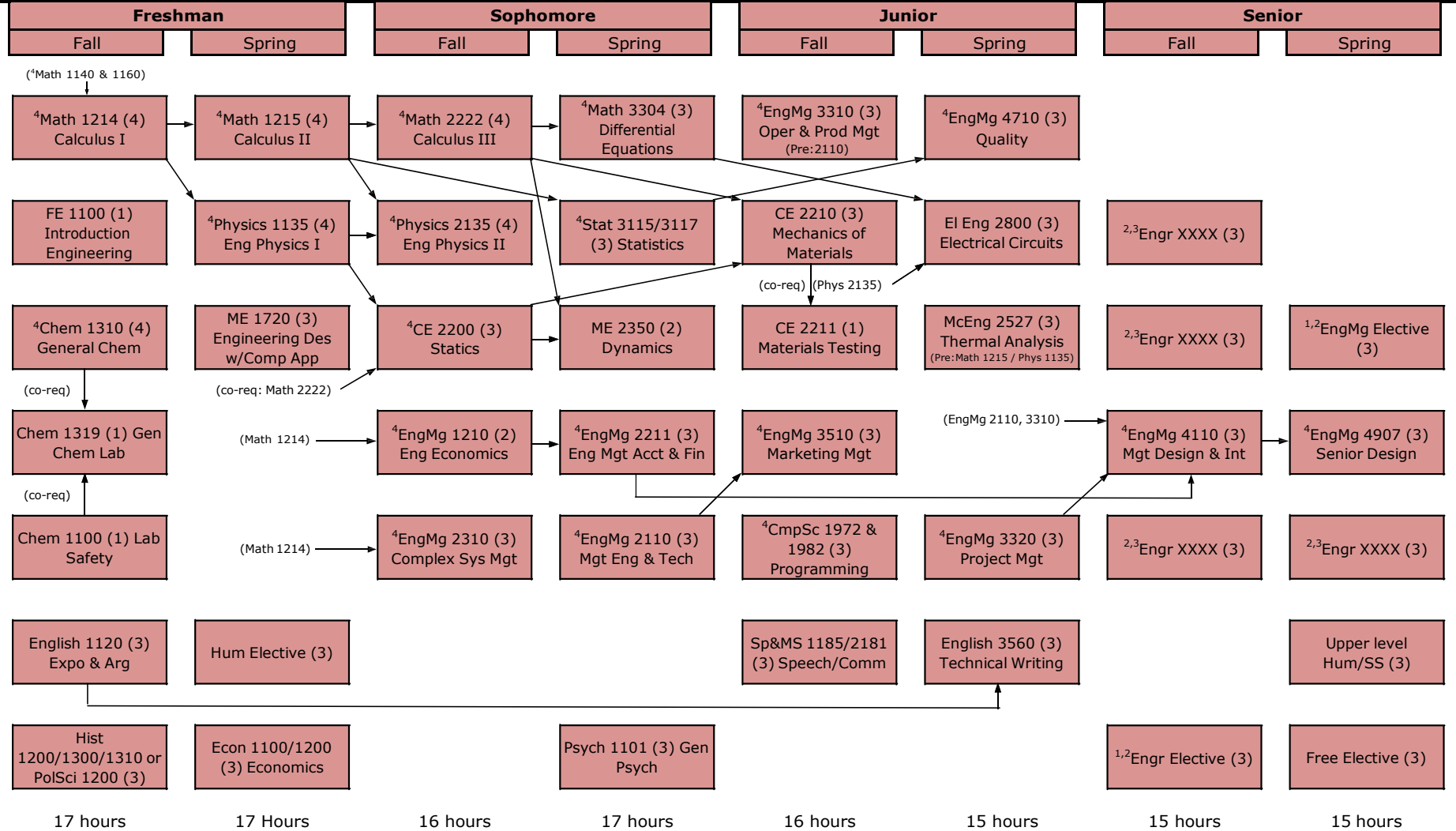


# B.S. Engineering Management, General Engineering Option

Effective for students entering the Engineering Management Program FS2015 or later.



<sup>1</sup>Eng Mg electives: Emgt 4XXX/5XXX, in consultation with your advisor

<sup>2</sup>Composite GPA for these six courses must be 2.x or better.

<sup>3</sup>15 hours of Engineering courses from a single outside department (e.g., Mechanical, Civil, Mining, etc.) are to be chosen in consultation with your advisor.

<sup>4</sup>Course must be completed with a grade of "C" or better